

SNAP•A•GEL™
**PRECAST
GELS**



500+ Options
Superior Performance

“Get Results in a Snap”

**Save Time
& Money!**

MINI SNAP-A-GELS[®]

Fast Run Times!

The mini size Snap-A-Gels run in 45 to 60 minutes, while competitive gels run in 90 to 120 minutes.

Results!

Snap-A-Gels are produced from only the highest-quality, electrophoresis-grade chemicals. They are cast by skilled lab technicians and are performance verified by a rigorous quality control process before being shipped to your lab. Get results the first time with high-speed, high-resolution Snap-A-Gels!

Fast Staining and Blotting!

Julie's 0.75mm thick gels stain and destain faster and transfer (blot) better than thicker gels.

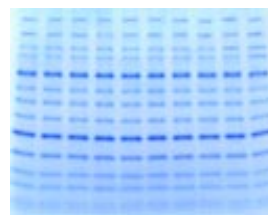
Easy-to-See Sample Wells!

Snappy-Load Decal[™] shows exact location of sample wells for easy sample loading.

Universal Cassette

Mini Snap-A-Gels fit most popular electrophoresis apparatuses.

Snap-A-Gel UNIVERSAL CASSETTES



Mini Snap-A-Gel Compatibility Chart

Manufacturer	Model	Compatible?
Amersham-Pharmacia-Hoefer	SE250, SE260 Mighty Small	Yes
BioRad Corporation	Mini Protean II [™] & III [™]	Yes
Invitrogen-Novex	XCell I & II, Sure Lock [™]	Yes
EC Apparatus-Thermo	EC-120 [™]	Yes
CBS Scientific	MGV-302 [™]	Yes
Owl Scientific	Penguin [™]	Yes
Owl/ISS/Enprotech [™]	ISS Enprotech unit	Yes, one gel only

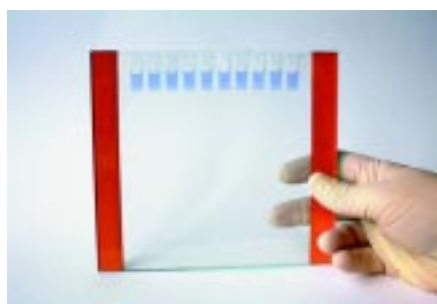


For more information or to order visit us at www.precastgels.com or call us at 1(800) 648-1772

LARGE SIZE PRECAST GELS

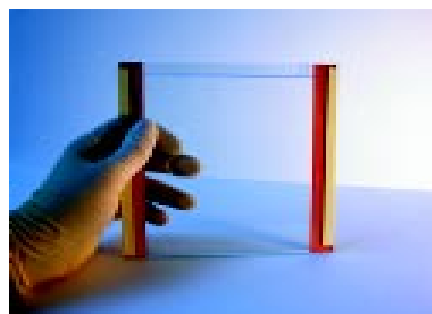
Fits Hoefer (Amersham-Pharmacia-Hoefer) apparatus models SE400, SE600, Ruby SE600, SE650 and SE700

- 16cm tall x 18cm wide glass cassette
- 0.75mm or 1.50mm gel thickness
- 2, 10, or 15 sample wells
- Tris Glycine, TBE, TBE-Urea and Tris Tricine buffer systems



1D GELS

**Save Time!
Get Results!
Increase Productivity!**

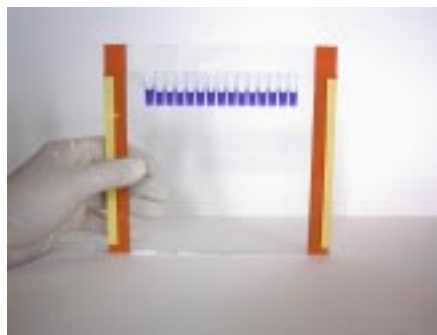


2D GELS

2D gels are poured to within 1cm from top of the cassette. A small sample well for standards and space for a 13cm IEF tube gel or IPG Strip are provided.

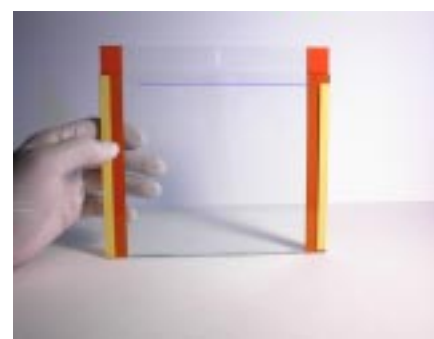
Fits BioRad Protean Ixi and IxI Apparatus.

- 16cm tall x 20cm wide front plate, 18.3cm tall x 20cm wide back plate
- 0.75mm or 1.50mm gel thickness
- 2, 10, or 15 sample wells
- Tris Glycine, TBE, TBE-Urea and Tris-Tricine buffer systems



1D GELS

**Save Time!
Get Results!
Increase Productivity!**



2D GELS

2D gels are poured to within 1cm from top of the cassette. A small sample well for standards and space for a 15cm IEF tube gel or IPG Strip are provided.

See ordering information on back pages.

For more information or to order visit us at www.precastgels.com or call us at 1(800) 648-1772

SELECT THE BEST GELS FOR YOUR SAMPLES

Use the sample gels below to select the acrylamide concentration best suited for your sample. Choose a lower acrylamide concentration for separating large proteins, or a higher concentration for smaller proteins. Choose gradient gels when the sample has a broad range of proteins. Gradient gels also tend to provide sharper bands. Examples below apply to both mini and large size gels, except the distance between bands will be greater using large size gels.

TRIS GLYCINE GELS

TRICINE

SINGLE CONCENTRATION

GRADIENT GELS

7.5%

10%

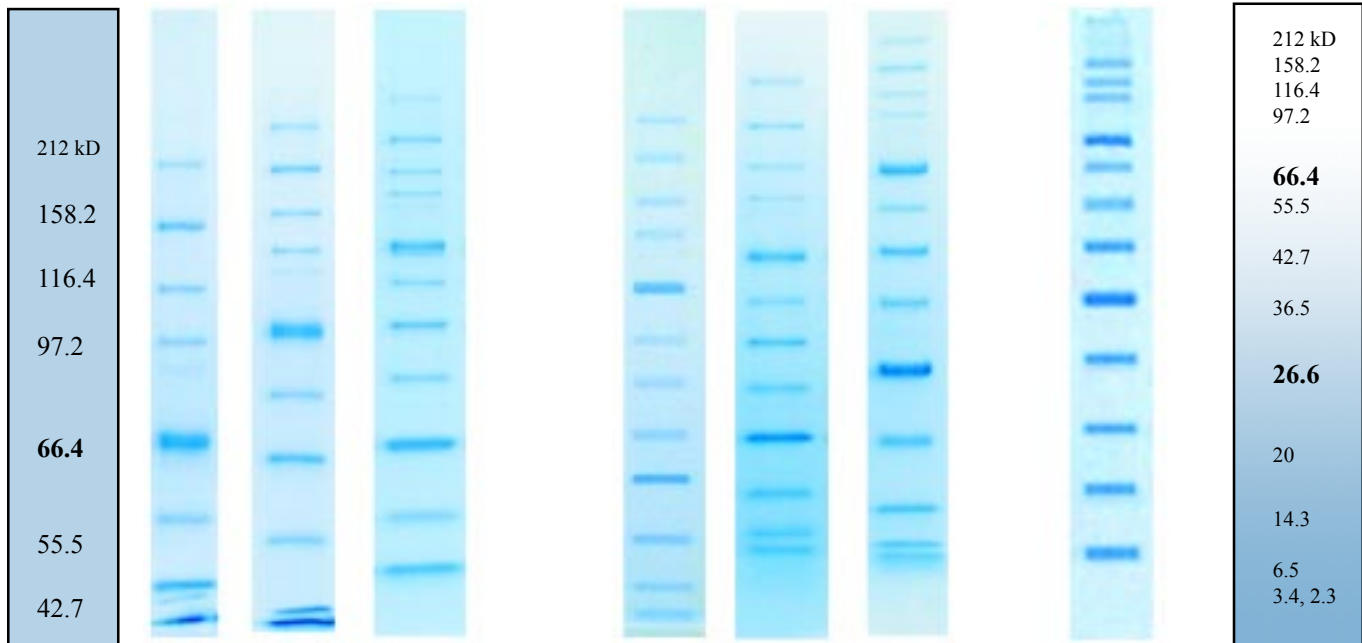
12%

4-15%

4-20%

10-20%

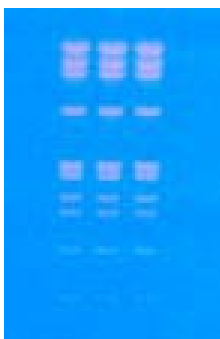
10-20%



The sample that was separated on each gel above had 13 protein bands, which ranged in size (Daltons) as follows: 212,000 (top of gel); 158,194; 116,351; 97,184; **66,409**; 55,561; 42,710; 36,487; **26,625**; 20,040; 14,313; 6,517; and 3,400-2,340 (Insulin A, B chain) Daltons. **Two bands at 66,400 and 26,600 Daltons are double intensity in order to serve as reference points.** The gel buffer is 0.375 M Tris-HCl, pH 8.8. Tris Glycine SDS was used as the running buffer.

PROTEIN STANDARDS, BROAD RANGE, Range 212 kD to 3.4 kD, 750 μ L, for 150 mini gel lanes

<u>DESCRIPTION</u>	<u>JULE CAT. NO.</u>	<u>UNIT</u>	<u>QTY/BOX</u>	<u>PRICE</u>
Unstained Standards	BRSTD	Vial	1 - 1125 ul	\$90.00
Prestained Standards	PRE-BRSTD	Vial	1 - 1050 ul	\$120.00



TBE GELS

TBE Gels provide high resolution of proteins or DNA under non-denaturing conditions. The photo at left shows a typical separation of DNA stained using ethidium bromide. Other fluorescent stains can be used as well. Resolve fragments from 10-3000 base pairs.

TBE/Urea Gels - For analysis of single stranded DNA and RNA size measurement, foot printing, and purification of oligonucleotides used for PCR* and cDNA screening. Resolve fragments from 10-1000 base pairs.

* PCR is a patented process of Hoffman-La Roche. Use of PCR process requires a license.

For more information or to order visit us at www.precastgels.com or call us at 1(800) 648-1772

BUFFER SYSTEM SELECTION

TRIS-GLYCINE GELS - Tris-Glycine Gels (glycine is in the running buffer, but gel buffer is 0.375M Tris-HCl, pH 8.8) can be used for DENATURING or NON-DENATURING samples. If SDS is added to the sample, then the sample becomes denatured. If SDS is not added to the sample, then the gel is used as a NON-DENATURING GEL.

Denaturing gels (0.375M Tris-HCl, pH 8.8) are used for separating proteins that have been exposed to SDS and therefore are in their denatured or unfolded state. These gels allow the proteins to be separated on the basis of size alone. These proteins are no longer "active," since they are unfolded. For flexibility, Jule Tris-Glycine Precast Gels are offered without SDS. Add SDS to the sample and running buffer in order to run these gels as denaturing gels.

Non-denaturing gels (0.375 M, Tris-HCl, pH 8.8) are used for separating proteins in their Native State. Native means any of the following: 1) the structure of a protein as it exists in nature; 2) the structure of a protein as isolated, if it retains enzymatic activity; 3) the form of a protein that has no biological activity but possesses secondary structure. All Jule Precast Gels are offered without SDS. Add SDS to the sample and running buffer in order to run these gels as denaturing gels.

TRICINE GELS - (Gel buffer is 1.0 M Tris-HCl, pH 8.45, 0.1% SDS) are used for separating proteins or peptides as small as 1,000 Daltons (1 kD). Tricine migrates faster than glycine and the smallest proteins, thereby enabling separation. Use Tricine gels in the range of 1,000 to 15,000 Daltons. Tricine gels require different upper and lower running buffers, which are available from VWR.

NON-DENATURING TRIS-BORATE-EDTA (TBE) Gels - TBE GELS are prepared in 0.090M Tris, 0.080M Boric Acid, pH 8.3, 0.0026M EDTA. These gels are used for non-denaturing (native) protein analysis as described at left under non-denaturing Tris-Glycine gels and non-denaturing DNA and RNA analysis (double stranded). The applications for DNA include but are not limited to purification of DNA restriction fragments for cloning, PCR product analysis and purification, and gel mobility shift assays.

DENATURING TBE/UREA GELS - Same as TBE Gels, except Urea (7 molar) is added. These gels are used for single stranded DNA and RNA analysis. The urea that is present in these gels is a denaturing agent that causes the DNA and RNA to become single-stranded by breaking the bonds that usually hold the DNA and RNA together. The applications for this type of gel include: DNA size measurements and Southern Blot Analysis, RNA size measurements and Northern Blot Analysis, DNA footprinting (localizing of protein binding site on DNA or detection of DNA-binding proteins), RNA footprinting (location of site of RNA-binding proteins), and purification of oligonucleotides used for PCR and cDNA screening.

Running & Sample Buffers



RUNNING AND SAMPLE BUFFERS

(See catalog numbers on back pages)

SNAP-A-GEL EMPTY CASSETTES & COMBS, 8 x 10 cm, for pouring 0.75mm and 1.50mm thick gels.

<u>DESCRIPTION</u>	<u>JULE CAT. NO.</u>	<u>UNIT</u>	<u>QTY/BOX</u>	<u>PRICE</u>
Cassette, Empty, 0.75mm	P75	1 Box	25	\$ 115.00
Cassette, Empty, 1.50mm	P15	1 Box	25	\$ 115.00
Comb, 10 well, 0.75mm	75C10	1 Box	15	\$ 30.00
Comb, 10 well, 1.50mm	15C10	1 Box	15	\$ 30.00

Empty Snap-A-Gel™ Cassettes



Pour your own gels in leak-tight Snap-A-Gel Empty Cassettes.

For more information or to order visit us at www.precastgels.com or call us at 1(800) 648-1772

JULE GRADIENT FORMERS

MAKE PERFECT LINEAR GRADIENTS IN 2 MINUTES OR LESS!



DUAL PISTON GRADIENT FORMERS

Jule Gradient Formers produce near-perfect linear gradients in less than 2 minutes. They are ideal for pouring polyacrylamide gels or sucrose gradients into centrifuge tubes. The patented dual-piston design keeps the fluid level equal in each chamber during gradient formation regardless of the differences in density or viscosity of the two fluids being mixed. The Jule Gradient Formers make it easy to pour accurate and reproducible gradients. Expect improved separations, especially when two bands are very close in size!

Automatic Mode: The Jule Gradient Former can be operated automatically by connecting it to a peristaltic pump.

- 1) Remove pistons.
- 2) Fill each cylinder with fluids to be mixed.
- 3) Insert pistons, start magnetic stirrer and pump.

As the pump draws liquid out, a vacuum is created within the Gradient Former. The pistons follow the liquid downward, keeping the fluid levels equal in each cylinder, resulting in a near-perfect linear gradient.

Manual Mode:

- 1) Remove pistons and fill each cylinder with the fluids to be mixed.
- 2) Insert the pistons, and start the magnetic stirrer.
- 3) Push by hand or use lead screw (models J5 and J17 only) to advance the pistons.

The dual pistons keep the fluid levels equal in each cylinder, thereby forming a near-perfect linear gradient.



DESCRIPTION	JULE CAT. NO.	QUANTITY	PRICE
Gradient Former, 50 ml	J50	1 each	\$360
Gradient Former, 17 ml	J17	1 each	\$360
Gradient Former, 5 ml	J5	1 each	\$360

For more information or to order visit us at www.precastgels.com or call us at 1(800) 648-1772

CATALOG NUMBERS FOR JULE MINI SNAP-A-GELS



UNIVERSAL CASSETTES

Gel buffer: 0.375M Tris-HCl, pH 8.8
 Running Buffer: Tris-Glycine
 For SDS or non-SDS application
 Single concentration gels have 4% stack.

MINI TRIS-GLYCINE GELS

ACRYLAMIDE CONCENTRATION	FORMAT	10 Gels / Box - \$99.50		2 Gels / Box - \$24	
			JULE CAT. NO.		JULE CAT. NO.
6%	.75 mm, 10 well		6W75M10		6W75M10T
	.75 mm, 15 well		6W75M15		6W75M15T
	1.5 mm, 10 well		6W15M10		6W15M10T
	1.5 mm, 15 well		6W15M15		6W15M15T
	1.5 mm, 2D well		6W15M2		6W15M2T
7.5%	.75 mm, 10 well		7.5W75M10		7.5W75M10T
	1.5 mm, 10 well		7.5W15M10		7.5W15M10T
8%	.75 mm, 10 well		8W75M10		8W75M10T
	.75 mm, 15 well		8W75M15		8W75M15T
	1.5 mm, 10 well		8W15M10		8W15M10T
	1.5 mm, 15 well		8W15M15		8W15M15T
	1.5 mm, 2D well		8W15M2		8W15M2T
10%	.75 mm, 10 well		10W75M10		10W75M10T
	.75 mm, 15 well		10W75M15		10W75M15T
	1.5 mm, 10 well		10W15M10		10W15M10T
	1.5 mm, 15 well		10W15M15		10W15M15T
	1.5 mm, 2D well		10W15M2		10W15M2T
12%	.75 mm, 10 well		12W75M10		12W75M10T
	.75 mm, 15 well		12W75M15		12W75M15T
	1.5 mm, 10 well		12W15M10		12W15M10T
	1.5 mm, 15 well		12W15M15		12W15M15T
	1.5 mm, 2D well		12W15M2		12W15M2T
14%	.75 mm, 10 well		14W75M10		14W75M10T
	.75 mm, 15 well		14W75M15		14W75M15T
	.75 mm, 2D well		14W15M2		14W15M2T
	1.5 mm, 10 well		14W15M10		14W15M10T
	1.5 mm, 15 well		14W15M15		14W15M15T
16%	.75 mm, 10 well		16W75M10		16W75M10T
	.75 mm, 15 well		16W75M15		16W75M15T
	.75 mm, 2D well		16W15M2		16W15M2T
	1.5 mm, 10 well		16W15M10		16W15M10T
	1.5 mm, 15 well		16W15M15		16W15M15T
18%	.75 mm, 10 well		18W75M10		18W75M10T
	.75 mm, 15 well		18W75M15		18W75M15T
	.75 mm, 2D well		18W15M2		18W15M2T
	1.5 mm, 10 well		18W15M10		18W15M10T
	1.5 mm, 15 well		18W15M15		18W15M15T

For more information or to order visit us at www.precastgels.com or call us at 1(800) 648-1772

MINI TRIS-GLYCINE GELS (Continued)

ACRYLAMIDE CONCENTRATION	FORMAT	10 Gels / Box - \$99.50		2 Gels / Box - \$24	
			JULE CAT. NO.		JULE CAT. NO.
4-12%	.75 mm, 10 well		412W75M10		412W75M10T
	.75 mm, 15 well		412W75M15		412W75M15T
	1.5 mm, 10 well		412W15M10		412W15M10T
	1.5 mm, 15 well		412W15M15		412W15M15T
	1.5 mm, 2D well		412W15M2		412W15M2T
4-15%	.75 mm, 10 well		415W75M10		415W75M10T
	1.5 mm, 10 well		415W15M10		415W15M10T
8-16%	.75 mm, 10 well		816W75M10		816W75M10T
	.75 mm, 15 well		816W75M15		816W75M15T
	1.5 mm, 10 well		816W15M10		816W15M10T
	1.5 mm, 15 well		816W15M15		816W15M15T
	1.5 mm, 2D well		816W15M2		816W15M2T
4-20%	.75 mm, 10 well		420W75M10		420W75M10T
	.75 mm, 15 well		420W75M15		420W75M15T
	1.5 mm, 10 well		420W15M10		420W15M10T
	1.5 mm, 15 well		420W15M15		420W15M15T
	1.5 mm, 2D well		420W15M2		420W15M2T
10-20%	.75 mm, 10 well		1020W75M10		1020W75M10T
	1.5 mm, 10 well		1020W15M10		1020W15M10T
	.75 mm, 15 well		1020W75M15		1020W75M15T
	.75 mm, 2D well		1020W15M2		1020W15M2T



MINI TBE GELS

Gel buffer: 0.090M Tris, 0.080M Boric Acid
pH 8.3, 0.0026M EDTA
Running Buffer: TBE

ACRYLAMIDE CONCENTRATION	FORMAT	10 Gels / Box - \$99.50		2 Gels / Box - \$24	
			JULE CAT. NO.		JULE CAT. NO.
6%	.75 mm, 10 well		6N75M10		6N75M10T
	.75 mm, 15 well		6N75M15		6N75M15T
	1.5 mm, 15 well		6N15M15		6N15M15T
8%	.75 mm, 10 well		8N75M10		8N75M10T
	.75 mm, 15 well		8N75M15		8N75M15T
	1.5 mm, 15 well		8N15M15		8N15M15T
10%	.75 mm, 10 well		10N75M10		10N75M10T
	.75 mm, 15 well		10N75M15		10N75M15T
	1.5 mm, 15 well		10N15M15		
20%	.75 mm, 10 well		20N75M10		20N75M10T
	.75 mm, 15 well		20N75M15		20N75M15T
4-12%	.75 mm, 10 well		412N75M10		412N75M10T
	.75 mm, 15 well		412N75M15		412N75M15T
4-20%	.75 mm, 10 well		420N75M10		420N75M10T
	.75 mm, 15 well		420N75M15		420N75M15T

For more information or to order visit us at www.precastgels.com or call us at 1(800) 648-1772

MINI TBE UREA GELS



Gel buffer: 0.090M Tris, 0.080M Boric Acid, pH 8.3
0.0026M EDTA, 7 Molar Urea
Running Buffer: TBE

ACRYLAMIDE CONCENTRATION	FORMAT	10 Gels / Box - \$99.50		2 Gels / Box - \$24	
			JULE CAT. NO.		JULE CAT. NO.
6%	.75 mm, 10 well		6U75M10		6U75M10T
	.75 mm, 15 well		6U75M15		6U75M15T
	1.5 mm, 2D well		6U15M2		6U15M2T
8%	.75 mm, 10 well		8U75M10		8U75M10T
10%	.75 mm, 10 well		10U75M10		10U75M10T
	.75 mm, 15 well		10U75M15		10U75M15T
	1.5 mm, 2D well		10U15M2		10U15M2T
15%	.75 mm, 10 well		15U75M10		15U75M10T
	.75 mm, 15 well		15U75M15		15U75M15T
	1.5 mm, 2D well		15U15M2		15U15M2T

MINI TRICINE GELS



Gel buffer: 1.0M Tris-HCl, pH 8.45, 0.1% SDS
Running Buffer: Tris-Tricine-SDS in upper chamber
Tris-HCl in lower chamber
Single concentration gels have 4% stack.

ACRYLAMIDE CONCENTRATION	FORMAT	10 Gels / Box - \$99.50		2 Gels / Box - \$24	
			JULE CAT. NO.		JULE CAT. NO.
10%	.75 mm, 10 well		10T75M10		10T75M10T
	.75 mm, 15 well		10T75M15		10T75M15T
	.75 mm, 2D well		10T15M2		10T15M2T
16%	.75 mm, 10 well		16T75M10		16T75M10T
	.75 mm, 15 well		16T75M15		16T75M15T
	.75 mm, 2D well		16T15M2		16T15M2T
10-20%	.75 mm, 10 well		1020T75M10		1020T75M10T
	.75 mm, 15 well		1020T75M15		1020T75M15T
	.75 mm, 2D well		1020T15M2		1020T15M2T

SAMPLE WELL CAPACITIES

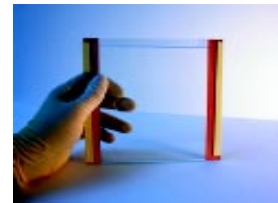
Mini Gels				Large Gels			
Gel Thickness	Sample Wells	Total Well Volume (microliters)	Recommended Sample Load (microliters)	Gel Thickness	Sample Wells	Total Well Volume (micro liters)	Recommended Sample Load (micro liters)
.75mm	10	25	2-15	.75mm	10	150	10-140
	15	18	2-10		15	80	10-65
1.50mm	10	50	3-30	1.50mm	10	320	10-300
	15	37	3-20		15	220	10-190

For more information or to order visit us at www.precastgels.com or call us at 1(800) 648-1772

Large Gels for Hoefer SE400, SE600, Ruby SE600, SE650 & SE750



Gel buffer: 0.375M Tris-HCl, pH 8.8
 Running Buffer: Tris-Glycine
 For SDS or non-SDS application
 Includes 4% stacking gel (except 2D gels)



LARGE TRIS-GLYCINE GELS

Cassette size: 16 cm tall x 18 cm wide

ACRYLAMIDE CONCENTRATION	FORMAT	6 Gels / Box - \$176		2 Gels / Box - \$66	
			JULE CAT. NO.		JULE CAT. NO.
6%	.75mm, 10 well		6W75HL10		6W75HL10T
	.75mm, 15 well		6W75HL15		6W75HL15T
	1.5mm, 10 well		6W15HL10		6W15HL10T
	1.5mm, 15 well		6W15HL15		6W15HL15T
	1.5mm, 2D well		6W15HL2		6W15HL2T
7.5%	.75mm, 10 well		7.5W75HL10		7.5W75HL10T
	1.5mm, 10 well		7.5W15HL10		7.5W15HL10T
8%	.75mm, 10 well		8W75HL10		8W75HL10T
	.75mm, 15 well		8W75HL15		8W75HL15T
	1.5mm, 10 well		8W15HL10		8W15HL10T
	1.5mm, 15 well		8W15HL15		8W15HL15T
	1.5mm, 2D well		8W15HL2		8W15HL2T
10%	.75mm, 10 well		10W75HL10		10W75HL10T
	1.5mm, 10 well		10W15HL10		10W15HL10T
	.75mm, 15 well		10W75HL15		10W75HL15T
	1.5mm, 15 well		10W15HL15		10W15HL15T
	1.5mm, 2D well		10W15HL2		10W15HL2T
12%	.75mm, 10 well		12W75HL10		12W75HL10T
	.75mm, 15 well		12W75HL15		12W75HL15T
	1.5mm, 10 well		12W15HL10		12W15HL10T
	1.5mm, 15 well		12W15HL15		12W15HL15T
	1.5mm, 2D well		12W15HL2		12W15HL2T
14%	.75mm, 10 well		14W75HL10		14W75HL10T
	.75mm, 15 well		14W75HL15		14W75HL15T
	1.5mm, 2D well		14W15HL2		14W15HL2T
	1.5mm, 10 well		14W15HL10		14W15HL10T
	1.5mm, 15 well		14W15HL15		14W15HL15T
16%	.75mm, 10 well		16W75HL10		16W75HL10T
	.75mm, 15 well		16W75HL15		16W75HL15T
	1.5mm, 2D well		16W15HL2		16W15HL2T
	1.5mm, 10 well		16W15HL10		16W15HL10T
	1.5mm, 15 well		16W15HL15		16W15HL15T
18%	.75mm, 10 well		18W75HL10		18W75HL10T
	.75mm, 15 well		18W75HL15		18W75HL15T
	1.5mm, 2D well		18W15HL2		18W15HL2T
	1.5mm, 10 well		18W15HL10		18W15HL10T
	1.5mm, 15 well		18W15HL15		18W15HL15T

For more information or to order visit us at www.precastgels.com or call us at 1(800) 648-1772

Large Gels for Hoefer SE400, SE600, Ruby SE600, SE650 & SE750 (continued)

LARGE TRIS-GLYCINE GELS (Continued)

ACRYLAMIDE CONCENTRATION	FORMAT	6 Gels / Box - \$176		2 Gels / Box - \$66	
			JULE CAT. NO.		JULE CAT. NO.
4-12%	.75mm, 10 well		412W75HL10		412W75HL10T
	.75mm, 15 well		412W75HL15		412W75HL15T
	1.5mm, 10 well		412W15HL10		412W15HL10T
	1.5mm, 15 well		412W15HL15		412W15HL15T
	1.5mm, 2D well		412W15HL2		412W15HL2T
4-15%	.75mm, 10 well		415W75HL10		415W75HL10T
	1.5mm, 10 well		415W15HL10		415W15HL10T
8-16%	.75mm, 10 well		816W75HL10		816W75HL10T
	.75mm, 15 well		816W75HL15		816W75HL15T
	1.5mm, 10 well		816W15HL10		816W15HL10T
	1.5mm, 15 well		816W15HL15		816W15HL15T
	1.5mm, 2D well		816W15HL2		816W15HL2T
4-20%	.75mm, 10 well		420W75HL10		420W75HL10T
	.75mm, 15 well		420W75HL15		420W75HL15T
	1.5mm, 10 well		420W15HL10		420W15HL10T
	1.5mm, 15 well		420W15HL15		420W15HL15T
	1.5mm, 2D well		420W15HL2		420W15HL2T
10-20%	.75mm, 10 well		1020W75HL10		1020W75HL10T
	1.5mm, 10 well		1020W15HL10		1020W15HL10T
	.75mm, 15 well		1020W75HL15		1020W75HL15T
	1.5mm, 2D well		1020W15HL2		1020W15HL2T

LARGE TBE GELS



Gel buffer: 0.090M Tris, 0.080M Boric Acid, pH 8.3
0.0026M EDTA
Running Buffer: TBE

Cassette size: 16 cm tall x 18 cm wide

ACRYLAMIDE CONCENTRATION	FORMAT	6 Gels / Box - \$176		2 Gels / Box - \$66	
			JULE CAT. NO.		JULE CAT. NO.
6%	.75mm, 10 well		6N75HL10		6N75HL10T
	.75mm, 15 well		6N75HL15		6N75HL15T
	1.5mm, 15 well		6N15HL15		6N15HL15T
8%	.75mm, 10 well		8N75HL10		8N75HL10T
	.75mm, 15 well		8N75HL15		8N75HL15T
	1.5mm, 15 well		8N15HL15		8N15HL15T
10%	.75mm, 10 well		10N75HL10		10N75HL10T
	.75mm, 15 well		10N75HL15		10N75HL15T
20%	.75mm, 10 well		20N75HL10		20N75HL10T
	.75mm, 15 well		20N75HL15		20N75HL15T
4-12%	.75mm, 10 well		412N75HL10		412N75HL10T
	.75mm, 15 well		412N75HL15		412N75HL15T
4-20%	.75mm, 10 well		420N75HL10		420N75HL10T
	.75mm, 15 well		420N75HL15		420N75HL15T

For more information or to order visit us at www.precastgels.com or call us at 1(800) 648-1772

Large Gels for Hoefer SE400, SE600, Ruby SE600, SE650 & SE750 (continued)



Gel buffer: 0.090M Tris, 0.080M Boric Acid, pH 8.3
0.0026M EDTA, 7 Molar Urea
Running Buffer: TBE

LARGE TBE-UREA GELS

Cassette size: 16 cm tall x 18 cm wide

ACRYLAMIDE CONCENTRATION	FORMAT	JULE CAT. NO.	VWR CAT. NO.	JULE CAT. NO.
6%	.75mm, 10 well	6U75HL10		6U75HL10T
	.75mm, 15 well	6U75HL15		6U75HL15T
	1.5mm, 2D well	6U15HL2		6U15HL2T
8%	.75mm, 10 well	8U75HL10		8U75HL10T
10%	.75mm, 10 well	10U75HL10		10U75HL10T
	.75mm, 15 well	10U75HL15		10U75HL15T
	1.5mm, 2D well	10U15HL2		10U15HL2T
15%	.75mm, 10 well	15U75HL10		15U75HL10T
	.75mm, 15 well	15U75HL15		15U75HL15T
	1.5mm, 2D well	15U15HL2		15U15HL2T



Gel buffer: 1.0M Tris-HCl, pH 8.45, 0.1% SDS
Running Buffer: Tris-Tricine-SDS in upper chamber
Tris-HCl in lower chamber
Includes 4% stacking gel (except 2D gels)

LARGE TRICINE GELS

Cassette size: 16 cm tall x 18 cm wide

ACRYLAMIDE CONCENTRATION	FORMAT	6 Gels / Box - \$176	2 Gels / Box - \$66
		JULE CAT. NO.	JULE CAT. NO.
10%	.75mm, 10 well	10T75HL10	10T75HL10T
	.75mm, 15 well	10T75HL15	10T75HL15T
	1.5mm, 2D well	10T15HL2	10T15HL2T
16%	.75mm, 10 well	16T75HL10	16T75HL10T
	.75mm, 15 well	16T75HL15	16T75HL15T
	1.5mm, 2D well	16T15HL2	16T15HL2T
10-20%	.75mm, 10 well	1020T75HL10	1020T75HL10T
	.75mm, 15 well	1020T75HL15	1020T75HL15T
	1.5mm, 2D well	1020T15HL2	1020T15HL2T

For more information or to order visit us at www.precastgels.com or call us at 1(800) 648-1772

Large Size Gels for the BioRad Protean II and Iixi



Gel buffer: 0.375M Tris-HCl, pH 8.8
 Use Tris-Glycine Running Buffer
 For SDS or non-SDS application
 Includes 4% stacking gel (except 2D gels)



LARGE TRIS-GLYCINE GELS

Cassette size: 16 x 20cm wide front plate
 18.3 x 20cm wide back plate

ACRYLAMIDE CONCENTRATION	FORMAT	6 Gels / Box - \$176		2 Gels / Box - \$66	
			JULE CAT. NO.		JULE CAT. NO.
6%	.75mm, 10 well		6W75BL10		6W75BL10T
	.75mm, 15 well		6W75BL15		6W75BL15T
	1.5mm, 10 well		6W15BL10		6W15BL10T
	1.5mm, 15 well		6W15BL15		6W15BL15T
	1.5mm, 2D well		6W15BL2		6W15BL2T
7.5%	.75mm, 10 well		7.5W75BL10		7.5W75BL10T
	1.5mm, 10 well		7.5W15BL10		7.5W15BL10T
8%	.75mm, 10 well		8W75BL10		8W75BL10T
	.75mm, 15 well		8W75BL15		8W75BL15T
	1.5mm, 10 well		8W15BL10		8W15BL10T
	1.5mm, 15 well		8W15BL15		8W15BL15T
	1.5mm, 2D well		8W15BL2		8W15BL2T
10%	.75mm, 10 well		10W75BL10		10W75BL10T
	1.5mm, 10 well		10W15BL10		10W15BL10T
	.75mm, 15 well		10W75BL15		10W75BL15T
	1.5mm, 15 well		10W15BL15		10W15BL15T
	1.5mm, 2D well		10W15BL2		10W15BL2T
12%	.75mm, 10 well		12W75BL10		12W75BL10T
	.75mm, 15 well		12W75BL15		12W75BL15T
	1.5mm, 10 well		12W15BL10		12W15BL10T
	1.5mm, 15 well		12W15BL15		12W15BL15T
	1.5mm, 2D well		12W15BL2		12W15BL2T
14%	.75mm, 10 well		14W75BL10		14W75BL10T
	.75mm, 15 well		14W75BL15		14W75BL15T
	1.5mm, 2D well		14W15BL2		14W15BL2T
	1.5mm, 10 well		14W15BL10		14W15BL10T
	1.5mm, 15 well		14W15BL15		14W15BL15T
16%	.75mm, 10 well		16W75BL10		16W75BL10T
	.75mm, 15 well		16W75BL15		16W75BL15T
	1.5mm, 2D well		16W15BL2		16W15BL2T
	1.5mm, 10 well		16W15BL10		16W15BL10T
	1.5mm, 15 well		16W15BL15		16W15BL15T
18%	.75mm, 10 well		18W75BL10		18W75BL10T
	.75mm, 15 well		18W75BL15		18W75BL15T
	1.5mm, 2D well		18W15BL2		18W15BL2T
	1.5mm, 10 well		18W15BL10		18W15BL10T
	1.5mm, 15 well		18W15BL15		18W15BL15T

For more information or to order visit us at www.precastgels.com or call us at 1(800) 648-1772

Large Size Gels for the BioRad Protean II and Iixi

LARGE TRIS-GLYCINE GELS (Continued)

ACRYLAMIDE CONCENTRATION	FORMAT		6 Gels / Box - \$176 JULE CAT. NO.		2 Gels / Box - \$66 JULE CAT. NO.
4-12%	.75mm, 10 well		412W75BL10		412W75BL10T
	.75mm, 15 well		412W75BL15		412W75BL15T
	1.5mm, 10 well		412W15BL10		412W15BL10T
	1.5mm, 15 well		412W15BL15		412W15BL15T
	1.5mm, 2D well		412W15BL2		412W15BL2T
4-15%	.75mm, 10 well		415W75BL10		415W75BL10T
	1.5mm, 10 well		415W15BL10		415W15BL10T
8-16%	.75mm, 10 well		816W75BL10		816W75BL10T
	.75mm, 15 well		816W75BL15		816W75BL15T
	1.5mm, 10 well		816W15BL10		816W15BL10T
	1.5mm, 15 well		816W15BL15		816W15BL15T
	1.5mm, 2D well		816W15BL2		816W15BL2T
4-20%	.75mm, 10 well		420W75BL10		420W75BL10T
	.75mm, 15 well		420W75BL15		420W75BL15T
	1.5mm, 10 well		420W15BL10		420W15BL10T
	1.5mm, 15 well		420W15BL15		420W15BL15T
	1.5mm, 2D well		420W15BL2		420W15BL2T
10-20%	.75mm, 10 well		1020W75BL10		1020W75BL10T
	1.5mm, 10 well		1020W15BL10		1020W15BL10T
	.75mm, 15 well		1020W75BL15		1020W75BL15T
	1.5mm, 2D well		1020W15BL2		1020W15BL2T

LARGE TBE GELS

Cassette size: 16 x 20cm wide front plate
18.3 x 20cm wide back plate



Gel buffer: 0.090M Tris, 0.080M Boric Acid, pH 8.3
0.0026M EDTA
Running Buffer: TBE

ACRYLAMIDE CONCENTRATION	FORMAT		6 Gels / Box - \$176 JULE CAT. NO.		2 Gels / Box - \$66 JULE CAT. NO.
6%	.75mm, 10 well		6N75BL10		6N75BL10T
	.75mm, 15 well		6N75BL15		6N75BL15T
	1.5mm, 15 well		6N15BL15		6N15BL15T
8%	.75mm, 10 well		8N75BL10		8N75BL10T
	.75mm, 15 well		8N75BL15		8N75BL15T
	1.5mm, 15 well		8N15BL15		8N15BL15T
10%	.75mm, 10 well		10N75BL10		10N75BL10T
	.75mm, 15 well		10N75BL15		10N75BL15T
20%	.75mm, 10 well		20N75BL10		20N75BL10T
	.75mm, 15 well		20N75BL15		20N75BL15T
4-12%	.75mm, 10 well		412N75BL10		412N75BL10T
	.75mm, 15 well		412N75BL15		412N75BL15T
4-20%	.75mm, 10 well		420N75BL10		420N75BL10T
	.75mm, 15 well		420N75BL15		420N75BL15T

For more information or to order visit us at www.precastgels.com or call us at 1(800) 648-1772

Large Size Gels for the BioRad Protean II and Ixi



Gel buffer: 0.090M Tris, 0.080M Boric Acid, pH 8.3
0.0026M EDTA, 7 Molar Urea
Running Buffer: TBE

LARGE TBE-UREA GELS

ACRYLAMIDE CONCENTRATION	FORMAT	6 Gels / Box - \$176 JULE CAT. NO.	2 Gels / Box - \$66 JULE CAT. NO.
6%	.75mm, 10 well	6U75BL10	6U75BL10T
	.75mm, 15 well	6U75BL15	6U75BL15T
	1.5mm, 2D well	6U15BL2	6U15BL2T
8%	.75mm, 10 well	8U75BL10	8U75BL10T
10%	.75mm, 10 well	10U75BL10	10U75BL10T
	.75mm, 15 well	10U75BL15	10U75BL15T
	1.5mm, 2D well	10U15BL2	10U15BL2T
15%	.75mm, 10 well	15U75BL10	15U75BL10T
	.75mm, 15 well	15U75BL15	15U75BL15T
	1.5mm, 15 well	15U15BL2	15U15BL2T

LARGE TRICINE GELS

Cassette size: 16 x 20cm wide front plate
18.3 x 20cm wide back plate



Gel buffer: 1.0M Tris-HCl, pH 8.45, 0.1% SDS
Running Buffer: Tris-Tricine-SDS in upper chamber
Tris-HCl in lower chamber
Single concentration gels have a 4% stack

ACRYLAMIDE CONCENTRATION	FORMAT	6 Gels / Box - \$176 JULE CAT. NO.	2 Gels / Box - \$66 JULE CAT. NO.
10%	.75mm, 10 well	10T75BL10	10T75BL10T
	.75mm, 15 well	10T75BL15	10T75BL15T
	1.5mm, 2D well	10T15BL2	10T15BL2T
16%	.75mm, 10 well	16T75BL10	16T75BL10T
	.75mm, 15 well	16T75BL15	16T75BL15T
	1.5mm, 2D well	16T15BL2	16T15BL2T
10-20%	.75mm, 10 well	1020T75BL10	1020T75BL10T
	.75mm, 15 well	1020T75BL15	1020T75BL15T
	1.5mm, 2D well	1020T15BL2	1020T15BL2T

BUFFERS

TRIS GLYCINE RUNNING BUFFERS		JULE CAT. NO.	Price
Tris-Glycine-SDS	10x, 1 LITER	TGSRB10X	\$22
Tris-Glycine	10x, 1 LITER	TGNRB10X	\$22

TBE RUNNING BUFFER (For TBE and Urea Gels)

TBE	10x, 1 LITER	TBERB10X	\$35
-----	--------------	----------	------

TRIS TRICINE RUNNING BUFFERS

Lower Running Buffer	5x, 1 LITER	TTLB5X	\$35
Upper Running Buffer	5x, 1 LITER	TTUB5X	\$63

SAMPLE BUFFERS

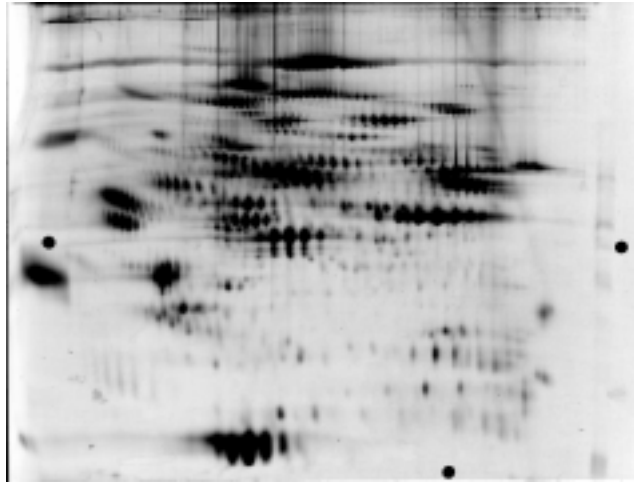
Tris-HCl, SDS	2x, 30 ml	TGSB2XR	\$12
Tris-HCl, Native	2x, 30 ml	TGNSB2X	\$12
Tris-Tricine, SDS	2x, 30 ml	TTSB2XR	\$12
TBE	2x, 30 ml	TBESB2X	\$12



For more information or to order visit us at www.precastgels.com or call us at 1(800) 648-1772

Jule Snap-A-Gels (TM)

for the Ettan Dalt and BioRad Protean Plus Dodeca Cell Systems



Specifications:

Low fluorescence glass plates

1.0 mm gel thickness

Front Plate is 21.2 cm tall x 27.6 cm wide,

Back Plate is 21.7 cm tall x 27.6 wide

Gel is 25.5 cm wide

Ultra flat top for 2D electrophoresis, poured 1.0 cm from top of front plate

Two month shelf life

Options available:

Single or Gradient acrylamide concentrations (you specify).

Bind silane applied to (specify short or tall plate) plate (Gel adheres to one plate for spot picking). Repel Silane is applied to opposite plate unless specified otherwise.

Fluorescent markers attached to one plate (2 markers).

19:1 Acrylamide:Bis Ratio (38:1 is standard ratio)

Sold in packs of 2 or 6 gels. You may purchase any quantity needed.

PRICES:	<u># Gels</u>	<u>Non-Gradient</u>	<u>Gradient</u>	<u>With Bind Silane</u>
	2 gels	\$45 each	\$49 each	Add \$4.00 per gel
	6+ gels	\$42 each	\$45 each	Add \$4.00 per gel